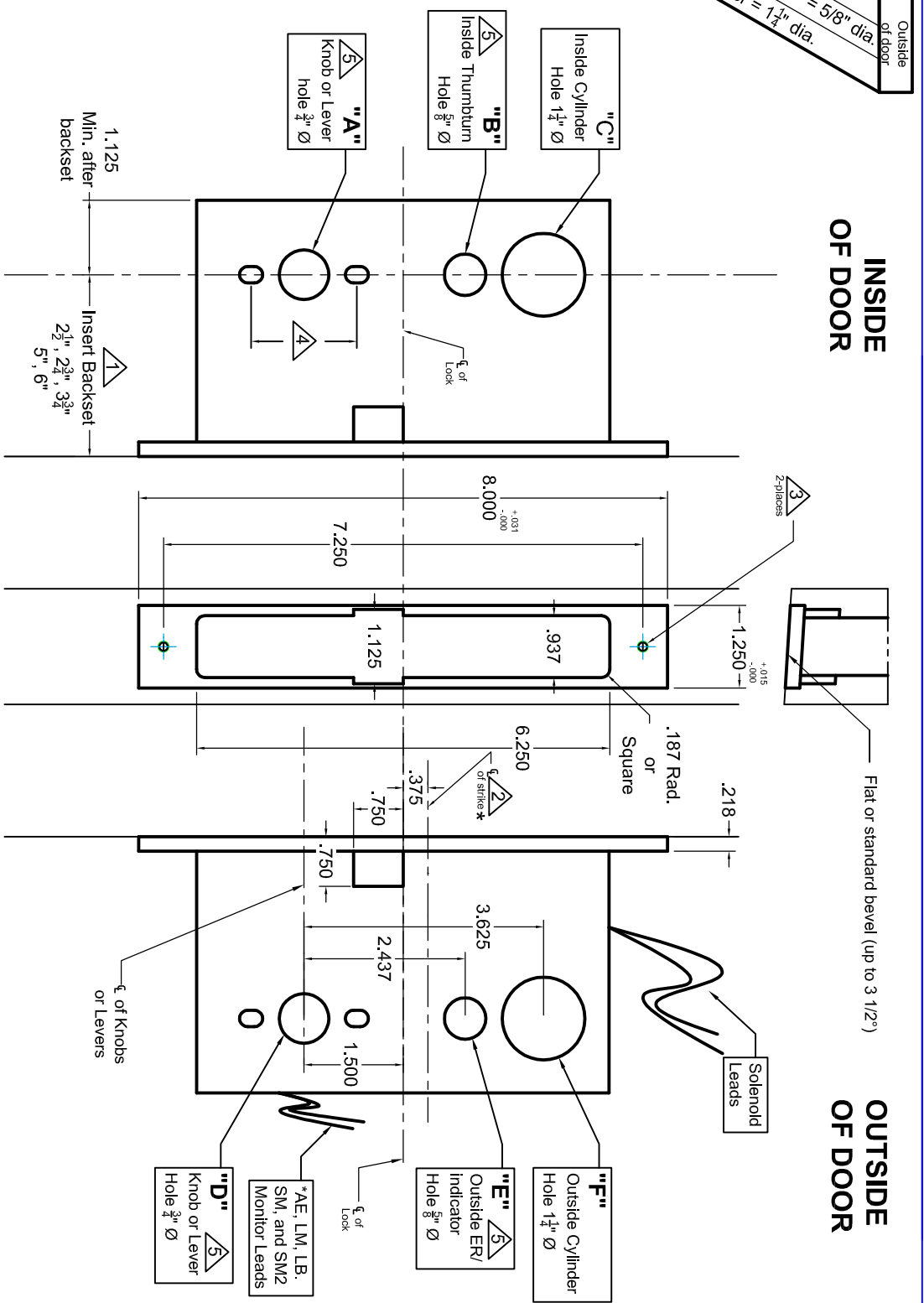


Lock Functions	9100ADL	9101	9102	9103	9122	9124	9124RL	9125	9125RL	9134	9139	9142	9143	9143E	9144	9144E	9145	9145S	9146	9148	9149	9153	9149	9156	9158	9159	9160	9167	9169	9158EL*	9158EU*	9159EL*	9159EU*
"A" knob/lever = 3/4" dia.																																	
"B" thumbturn = 5/8" dia.																																	
"C" cylinder = 1 1/4" dia.																																	
"D" knob/lever = 3/4" dia.																																	
"E" ER or indicator = 5/8" dia.																																	
"F" cylinder = 1 1/4" dia.																																	

Lock Functions	9100ADL	9101	9102	9103	9122	9124	9124RL	9125	9125RL	9134	9139	9142	9143	9143E	9144	9144E	9145	9145S	9146	9148	9149	9153	9149	9156	9158	9159	9160	9167	9169	9158EL*	9158EU*	9159EL*	9159EU*
"A" knob/lever = 3/4" dia.																																	
"B" thumbturn = 5/8" dia.																																	
"C" cylinder = 1 1/4" dia.																																	
"D" knob/lever = 3/4" dia.																																	
"E" ER or indicator = 5/8" dia.																																	
"F" cylinder = 1 1/4" dia.																																	

Accurate Lock and Hardware

Standard 9100 Lever x Lever or Knob x Knob Template
All Backsets



Notes:

- △ Insert backset here 2 1/2", 2 3/4", 3 3/4", 5", or 6"
 - △ ASA strike details on template # T-ALH.ASA STK (*use template # T-ALH.ASADB STK for #s 9101, 9102 and 9103)
 - △ Prep for #12 wood or 12-24 machine screws
 - △ Thru bolting holes ONLY if required. See trim manufacturers standard template for details.
- Accurate lock's accommodates 1 1/2" to 1 11/16" center to centers and up to 1/2" dia. post.
- If there are any additional questions about the thru-bolting, please contact our office.
- Knob, thumbturn and ER holes may vary from different trim manufacturers. Please refer to their templates to confirm these dimensions.

Additional Notes:

- a) **Responsibility:** Door and frame manufacturers are responsible for providing adequate construction or re-inforcement for proper installation of hardware shown.
- b) Please contact us if a double lip strike is needed - for a proper template
- c) See catalog / spec sheets for additional lock details