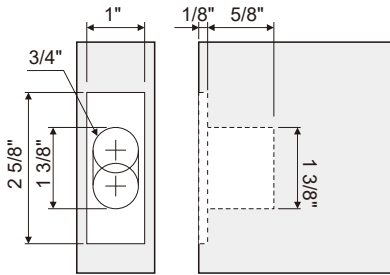


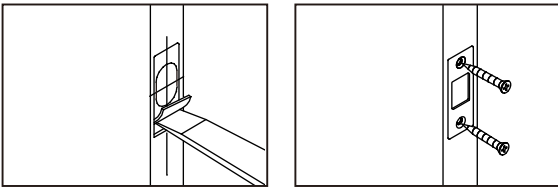
### Install Strike

On the door frame, align the center of the strike with the center of the latch bolt faceplate and trace its edges.

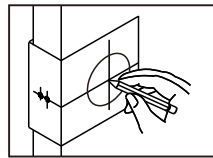
Drill holes as shown.



Chisel a 1/8" deep indentation within the traces of the strike. Place the strike flush with the door frame and secure it with screws.

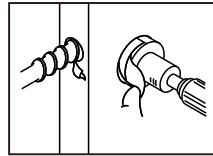


### Mark Door with Template

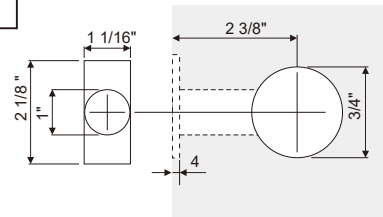


Fold the paper guide and place it on the corner of the door 36" from the floor (from floor to center of drilling point indicated by pencil in illustration). Make markings on the face and side of the door with the holes on the paper guide.

### Drill Holes



Drill the 3/4" diameter lock body hole on the face of the door and the 1" diameter latch bolt hole on the side of the door as indicated by the markings.



PL52 Template



linnea®